



# Anti-Siphon Wall Faucets

## Model 24/B24/Y24

The Model 24 and B24 are anti-siphon, vacuum breaker protected wall faucets designed for irrigation purposes in mild climate areas. The Model B24 is enclosed in a flush mounted wall box. Both models are designed to blend with modern architecture for installation on or in homes, service stations, churches, motels, drive-in restaurants, etc. The Model Y24 is designed to be used on a stand pipe in the lawn and garden, etc.

### SPECIFICATIONS:

#### VACUUM BREAKER - ANTI-SIPHON:

- NIDEL® Model 34HF with 3/4 inch male hose thread
- ASSE Standard 1011 approved
- IAPMO® listed
- Canadian Standards Association

**EPDM PACKING:** Prevents leaking.

**PACKING NUT:** Adjustable brass nut with deep stem guard.

**VALVE SEAT:** Standard "O" size washer.

**HANDLES:** Furnished with polycarbonate wheel handle and loose tee key.

**Optional:** Metal wheel handle.

**INLETS:** Model 24 as shown below.  
Model B24: 24P- 1/2 or 24P 3/4 only.  
Model Y24: 3/4" FPT.

**MAX PRESSURE:** 125 p.s.i.

**MAX TEMPERATURE:** 120° F

**SHIPPING WEIGHT:** (per unit)

**MODEL 24 & Y24:** 1 lb

**MODEL B24:** 13 lbs (brass or chrome box)  
6 lbs (aluminum box)



**MODEL 24**

#### Exterior Finish:

Standard - Chrome (CH)  
Optional- Rough Brass (BR) or Polished Chrome (PC)



**MODEL B24**

#### Exterior Finish:

Standard - Chrome (CH)  
Optional- Rough Brass (BR) or Polished Brass (PB)  
Other Options: Anodized Aluminum Box (AL)



**MODEL Y24**

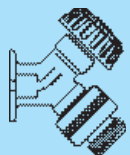
#### Exterior Finish:

Standard - Chrome (CH)  
Optional- Rough Brass (BR) or Polished Chrome (PC)

### Inlet Descriptions

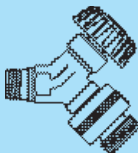
#### MODEL 24/B24

P-1/2 Inlet  
1/2" FPT  
P-3/4 Inlet  
3/4" FPT



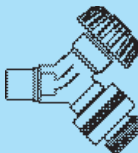
#### MODEL 24 ONLY

CP Inlet  
COMBINATION  
1/2" COPPER TUBE  
1/2" MPT



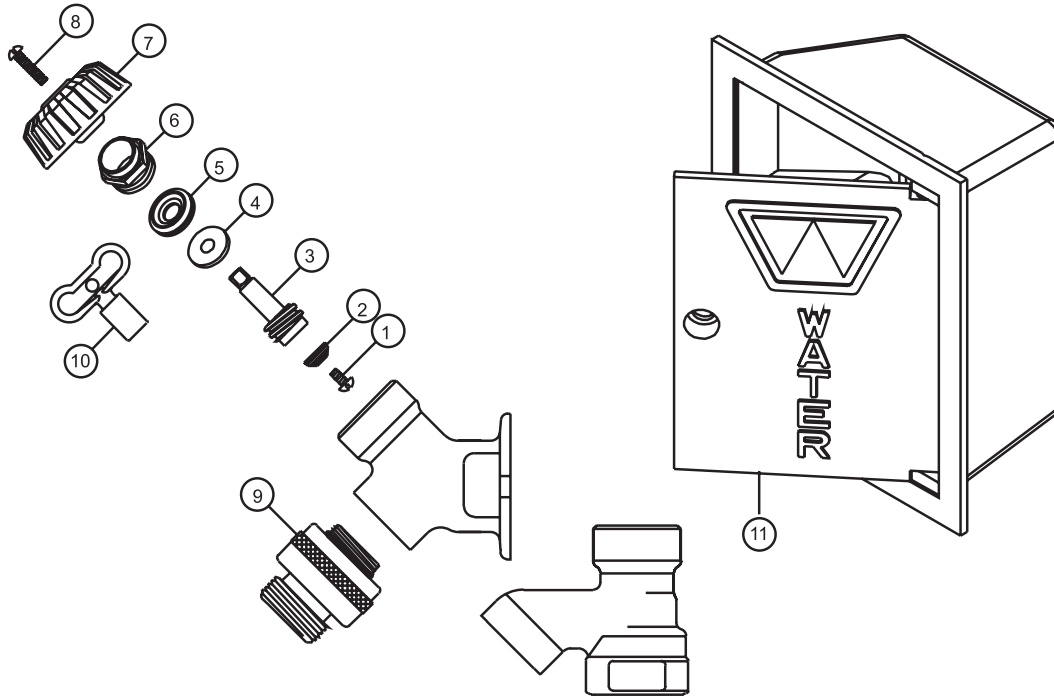
#### MODEL 24 ONLY

C Inlet  
COMBINATION  
1/2" COPPER TUBE  
3/4" COPPER TUBE



**For Installation / Troubleshooting Instructions go to  
[www.woodfordmfg.com](http://www.woodfordmfg.com) or call 1-800-621-6032**

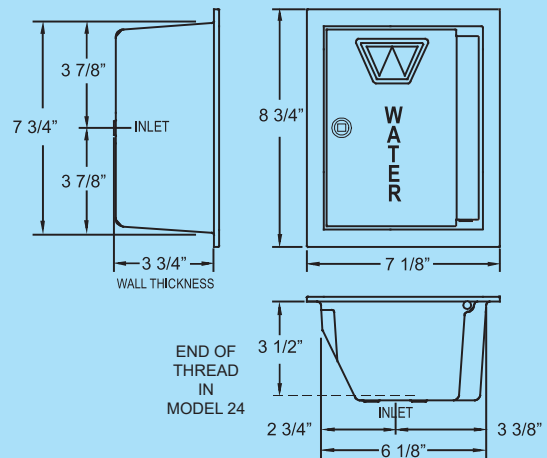
**WOODFORD**



**MODEL 24/B24/Y24 PARTS LIST**

ITEM	PART#	DESCRIPTION
1	30009	Washer Screw
2	30008	Washer
3	30104	Operating Stem
4	30105	Packing Support Washer
5	30247	EPDM Packing
6	30109	Packing Nut - Chrome
	30107	Packing Nut - Brass
7	30120	Wheel Handle - Clear
	30233	Wheel Handle - Tan
8	30121	Handle Screw - Nickel
	30002	Handle Screw - Brass
9	34HF-CH	34HF Vacuum Breaker - Chrome
	34HF-BR	34HF Vacuum Breaker - Brass
10	50009	Tee Key
11	B24BX	Box/Door Assembly - Chrome
	B24BX-BR	Box/Door Assembly - Brass
	B24BX-PB	Box/Door Assembly - Polished Brass
	B24BX-AL	Box/Door Assembly - Anodized Aluminum
	RK-24	Chrome Repair Kit (Includes items 1-8)
	RK-H34	Brass Repair Kit (Includes items 1-8)

**MODEL B24  
Rough-In Dimensions**



Patent Information is available at <http://www.Woodfordmfg.com/Woodford/patents/>

*For more information contact...*

**WOODFORD MANUFACTURING COMPANY**

2121 Waynoka Road, Colorado Springs, Colorado 80915 • Phone: (800) 621-6032 • Fax: (800) 765-4115

To view our complete product line visit: [www.woodfordmfg.com](http://www.woodfordmfg.com)

email: [sales@woodfordmfg.com](mailto:sales@woodfordmfg.com) POs: [PO@woodfordmfg.com](mailto:PO@woodfordmfg.com)

A Division Of WCM Industries, Inc.